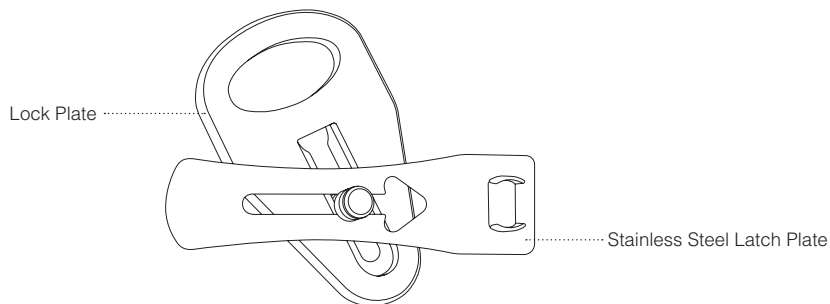


# PORTABLE DOOR LOCK



## IMPORTANT SAFETY INFORMATION

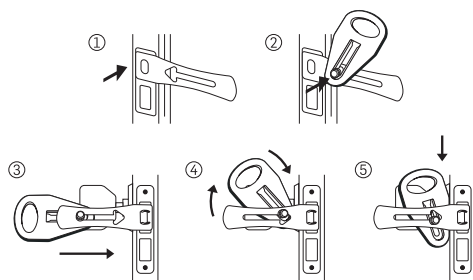
**CAUTION: KEEP FINGERS AWAY FROM MOVING PARTS WHEN OPENING AND CLOSING DOORS.**  
**WARNING: ONLY USE PRODUCT AS INTENDED. INAPPROPRIATE USE MAY CAUSE INJURY.**

## Using Your Portable Door Lock

1. No extra tools or drilling necessary.
2. Open the door you want to install the Portable Door Lock on.
3. Attach the lock plate to the stainless steel latch plate by placing the arrow on top of the movable piece and sliding it through.
4. Standing inside the room, place the stainless steel latch onto the existing plate on the door.

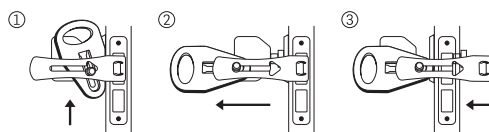
**Note:** The movable piece should be positioned at the bottom of the arrowhead to reinforce the lock plate.

5. Close the door to keep the lock in place. The pressure from the Portable Door Lock will keep the door secure.



## Tips for Using Your Portable Door Lock

- ◆ If you want to open the door slightly, simply hold the lock in place while you open the door. This will allow you to receive mail or see who is on the other side of the door.



## Caring Information

- ◆ If your lock needs cleaning, simply wipe with a damp cloth and dry immediately. Do not attempt to soak lock in water or liquid cleansers. If lock is exposed to moisture for too long, it will begin to rust.
- ◆ When not in use, keep your lock in the carrying pouch and away from dust and moisture.

## Technical Specifications

Dimensions	13 x 6 x 2cm
Weight	97g
Material	Plastic, Rubber, Stainless Steel
Package includes	Portable Door Lock and Carry Pouch